

# CAST STEEL (A 216 GR. WCB) GATE VALVE CLASS - 150

## Specification & Features:

Conforming to BS : 1414 / ANSI B16.34 / API 600

Flanged ends to ANSI B16.5 CL-150 RF

Outside screw, yoke type, rising stem, bolted bonnet.

Renewable S.S 13% Cr. (AISI - 410) Working Parts.

Handwheel operated.

## Pressure / Temperature ratings in accordance with ANSI B16.34

Temperature Celsius	-29 +38	100°	150°	200°	250°	300°	350°	375°	400°	425°	450°	475°	500°	538°
Pressure bar	19.7	17.7	15.8	14.0	12.1	10.2	8.4	7.4	6.5	5.6	4.6	3.7	2.8	1.4

\*Prolonged Temperatures above 425 celsius may result in deterioration of the carbon phase of carbon steel.



ITEM CODE # CS - 201

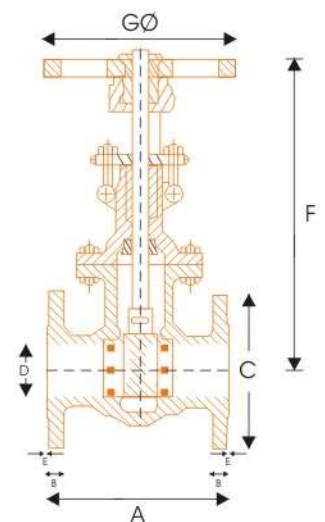
## Materials of Construction

NAME OF PART	MATERIAL	STANDARD
Body, Disc, Bonnet & Gland Flange	Carbon Steel	ASTMA 216 Gr. WCB
Body Seat Ring & Wedge Facing	Stainless Steel	ASTM 276 TYPE 410
Back Seat Bush, Lock Bush, Gland & Stem	Stainless Steel	ASTM 276 TYPE 410
Eye Bolt & Nut	Carbon Steel	
Grease Nipple, Grub Screw & Sleeve Nut	Steel	
Gasket	Non - Asbestos Fibre	BS - 1832
Nut	H.T. Steel	ASTMA 194 Gr. 2H
Stud	Alloy Steel	ASTMA 193 Gr. B7
Gland Packing	Graphoil	
Sleeve	S.S./Nodular Iron	ASTM 276 TYPE 304 / ASTM 439 D2

Test Pressure	Body	Seat
Hydraulic :	30 Bar	22 Bar
Air :	6.9 Bar	---

## Sizes / Dimensions

Sizes		Dimensions						
Inches	mm	A	B	C	D	E	F	GØ
1-1/2	40	165	14.3	127	73	1.6	330	210
2	50	178	16	152	92	1.6	340	210
2-1/2	65	190	17.5	178	104.8	1.6	395	210
3	80	203	19	190	127	1.6	430	225
4	100	229	23.8	229	157.2	1.6	521	255
6	150	267	25.4	279	216	1.6	666	356
8	200	292	28.6	343	270	1.6	783	400



**B.V.M. MANUFACTURERS & EXPORTERS**

