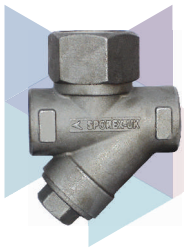


We **Believe**  
in quality as we  
**Respect** your  
demand

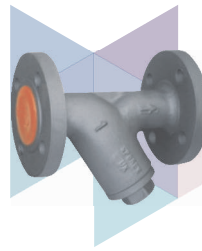


# Index



## STAINLESS STEEL STEAM TRAP

ITEM CODE # SS - 801 PAGE-1



## CAST IRON 'Y' - STRAINER (FLANGED)

ITEM CODE # SG - 402 PAGE-8



## CAST IRON INVERTED BUCKET TYPE STEAM TRAP

ITEM CODE # CI - 112 PAGE-2



## GATE VALVE CLASS-800 (REDUCED BORE)

ITEM CODE # FS - 301 PAGE-9



## BALL FLOAT STEAM TRAP (SCREWED)

ITEM CODE # SG - 403 PAGE-3



## GLOBE VALVE CLASS-800 (REDUCED BORE)

ITEM CODE # FS - 302 PAGE-10



## BALL FLOAT STEAM TRAP (FLANGED)

ITEM CODE # SG - 404 PAGE-4



## LIFT CHECK VALVE CLASS-800 (REDUCED BORE)

ITEM CODE # FS - 303 PAGE-11



## GLOBE STEAM STOP VALVE (FLANGED)

ITEM CODE # CI - 101 PAGE-5



## FORGED STEEL BALL VALVE CL-800

ITEM CODE # FS - 305 PAGE-12



## BELLOW SEAL GLOBE VALVE (FLANGED)

ITEM CODE # SG - 405 PAGE-6



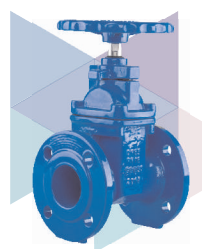
## BUTTERFLY VALVE (WAFER TYPE)

ITEM CODE # CI - 110 PAGE-13



## S.G. IRON 'Y' - STRAINER (SCREWED)

ITEM CODE # SG - 401 PAGE-7



## RESILIENT SEAT GATE VALVE

ITEM CODE # CI - 113 PAGE-14



### SWING TYPE WAFER CHECK VALVE

ITEM CODE # FS - 304 PAGE-15



### HORIZONTAL SWING CHECK VALVE (FLANGED)

ITEM CODE # CI - 114 PAGE-22



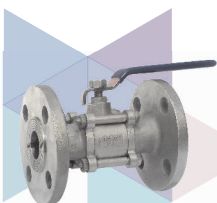
### DUAL PLATE CHECK VALVE

ITEM CODE # CI - 111 PAGE-16



### GUN METAL GLOBE VALVE (UNION BONNET)

ITEM CODE # GM - 502 PAGE-23



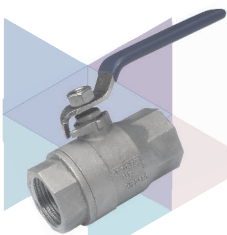
### STAINLESS STEEL BALL VALVE (3PC. DESIGN)

ITEM CODE # SS - 804 PAGE-17



### GUN METAL GLOBE VALVE

ITEM CODE # GM - 506 PAGE-24



### STAINLESS STEEL BALL VALVE (2PC. DESIGN)

ITEM CODE # SS - 802 PAGE-18



### GUN METAL CHECK VALVE (UNION CAP)

ITEM CODE # GM - 504 PAGE-25



### CAST STEEL GATE VALVE CLASS 150

ITEM CODE # CS - 201 PAGE-19



### GUN METAL CHECK VALVE

ITEM CODE # GM - 508 PAGE-26



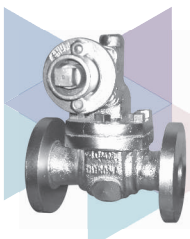
### CAST STEEL GLOBE VALVE CLASS 150

ITEM CODE # CS - 202 PAGE-20



### HORIZONTAL LIFT CHECK VALVE (FLANGED)

ITEM CODE # CI - 103 PAGE-27



### CAST STEEL PARALLEL SLIDE BLOW DOWN VALVE

ITEM CODE # CS - 203 PAGE-21



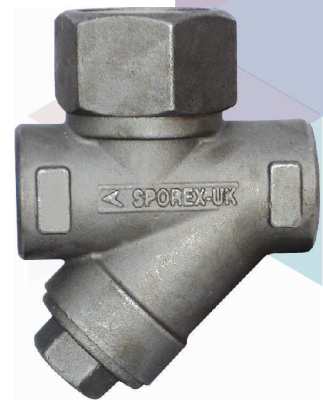
### GUN METAL SAFETY VALVE RELIEF VALVE

ITEM CODE # GM - 510 PAGE-28

# STAINLESS STEEL STEAM TRAP

## Features :

Inbuilt Strainer : Avoids Clogging  
Screwed Female BSP Taper Ends / Socket Welded Ends  
Hardened Disc To Withstand Continuous Water Hammering  
All Stainless Steel Construction : Better Mechanical Properties  
Seat Integral With Body : No Possibility Of Leakage From Joints



ITEM CODE # SS - 801

## Materials of Construction

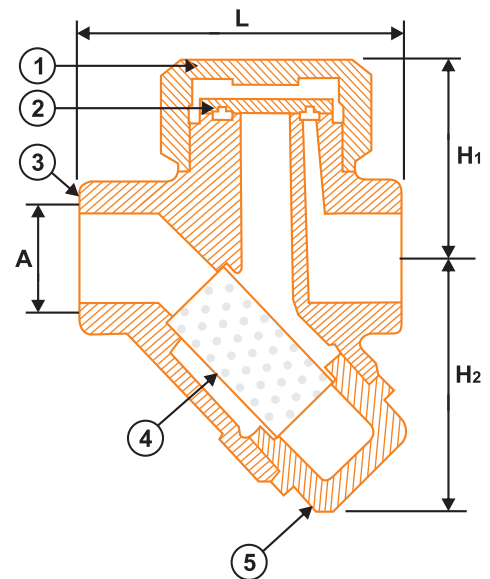
NAME OF PART	MATERIAL	STANDARD
(1) Top Cover	Cast Stainless Steel	ASTM-A 743 Gr. CA 40
(2) Disc	Cast Stainless Steel	ASTM-A 743 Gr. CA 40
(3) Body	Cast Stainless Steel	ASTM-A 743 Gr. CA 40
(4) Screen	Stainless Steel	AISI - 304
(5) Bottom Cover	Cast Stainless Steel	ASTM-A743 Gr. CA 40

## Limiting Conditions : In accordance with ISO 6552

Body Design Conditions PN 63  
Cold Hyd. Test Pressure 95 bar  
PMA - Maximum Allowable Pressure 63 bar  
PMO - Maximum Operating Pressure 42 bar  
TMA - Maximum Allowable Temperature 400°C  
TMO - Maximum Operating Temperature 255°C

## Sizes / Dimensions

Sizes		Dimensions			
Inches	mm	A	L	H1	H2
1/2"	15	1/2" BSP	78	44	60
3/4"	20	3/4" BSP	78	44	60
1"	25	1" BSP	84	54	70
1.1/2"	40	1.1/2" BSP	108	70	88
2"	50	2" BSP	108	70	88



## Discharge Capacity

TRAP DISCHARGE CAPACITY (kg/hr)									
Size	DIFFERENTIAL PRESSURE (bar)								
	5.0	10.0	15.0	20.0	25.0	30.0	35.0	40.0	42.0
DN 15, 20	380	480	540	590	640	665	695	720	725
DN 25	465	610	710	795	870	940	995	1050	1066
DN 40, 50	560	740	870	995	1095	1180	1295	1380	1390

**B.V.M. MANUFACTURERS & EXPORTERS**

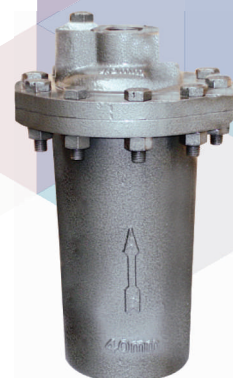




# CAST IRON INVERTED BUCKET TYPE STEAM TRAP

## Specification & Features:

Inverted Bucket Type Steam Trap with  
Stainless Steel AISI 304 Bucket And  
Renewable Stainless Steel Working Parts  
Screwed Female Ends To BS 21 / NPT.



ITEM CODE # CI - 112

## Materials of Construction

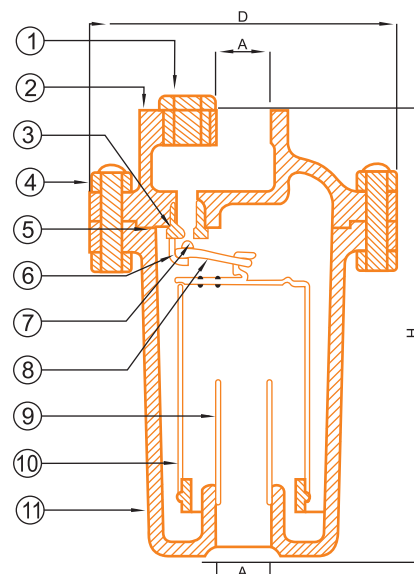
NAME OF PART	MATERIAL	STANDARD
(1) Plug	Bronze	BS : 1982 491K
(2) Cover	Cast Iron	BS 1561 GJL-250 (GG25)
(3) Valve Seat	Stainless Steel	ASTM A276 Type 410
(4) Fastners	Alloy Steel	-----
(5) Gasket	Non Asbestos Fiber	-----
(6) Hook	Stainless Steel	AISI 304
(7) Ball Seat	Stainless Steel	AISI 410
(8) Lever	Stainless Steel	AISI 304
(9) Pipe	G.I.	-----
(10) Bucket	Stainless Steel	AISI 304
(11) Body	Cast Iron	BS 1561 GJL-250 (GG25)

PMO - Maximum Operating Pressure 17.5 bar

TMA - Maximum Allowable Temperature 220°C

## Sizes / Dimensions (mm)

Size		Dimensions (mm)		
Inches	mm	A	H	D
1/2"	15	1/2" BSP	168	142
3/4"	20	3/4" BSP	200	142
1"	25	1" BSP	268	186
1.1/2"	40	1.1/2" BSP	395	238
2"	50	2" BSP	452	286



## Discharge Capacity

TRAP DISCHARGE CAPACITY (kg/hr)															
Size	DIFFERENTIAL PRESSURE (psi)														
	4	7	15	30	43	57	70	85	100	115	128	142	156	170	185
DN 15	220	255	320	395	450	530	575	605	640	670	720	760	790	825	860
DN 20	275	320	405	550	660	750	835	905	990	1060	1095	1150	1200	1240	1290
DN 25	880	1125	1550	2070	2535	2920	3360	3745	4130	4450	4860	5185	5385	5510	6030
DN 40, 50	1760	2070	2535	3195	3855	4405	4845	5285	5615	6050	6380	6850	7040	7280	7410

**B.V.M. MANUFACTURERS & EXPORTERS**



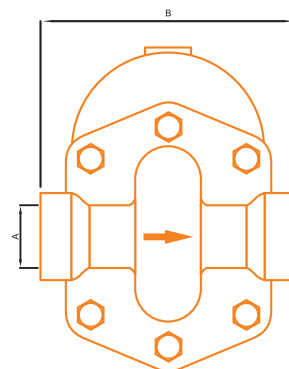
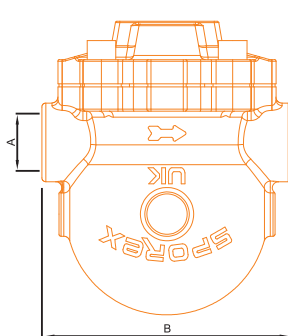
# BALL FLOAT STEAM TRAP (SCREWED/FLANGED)

## Description :

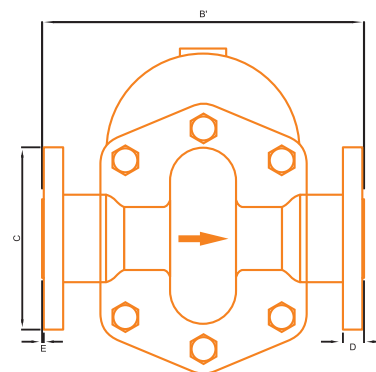
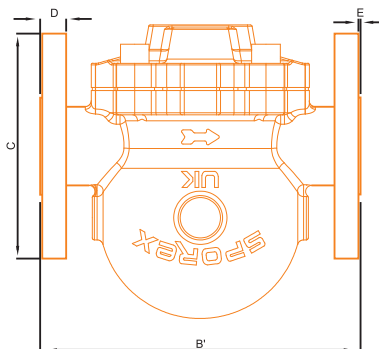
Ball Float Steam Trap is meant for timely removal of Condensate from the Pipe Line without compromising on the energy (steam) losses. It's a Mechanical Steam Trap which works on the principle of Difference between Densities of Steam and Condensate.

## Features :

- ➔ Screwed Female Ends To BS 21 / NPT
- ➔ Flanged Ends to PN 16 RF
- ➔ All Stainless Steel Working Parts
- ➔ With Thermostatic Air Vent
- ➔ Painted with Heat Resistant Paint (upto 400°C)
- ➔ Drain Plug provided for Removal of Impurities



ITEM CODE # SG - 403



ITEM CODE # SG - 404

## Sizes / Dimensions (mm)

Size	A	B	B'	C	D	E
DN 15	1/2" BSP	92	150	95	14	2
DN 20	3/4" BSP	92	150	105	16	2
DN 25	1" BSP	95	160	115	16	2
DN 40	1.1/2" BSP	230	320	150	18	3
DN 50	2" BSP	230	320	165	20	3

**B.V.M. MANUFACTURERS & EXPORTERS**



# BALL FLOAT STEAM TRAP (SCREWED/FLANGED)

**Limiting Conditions :** In accordance with ISO 6552

Body Design Conditions PN 16

Cold Hyd. Test Pressure 24 bar g

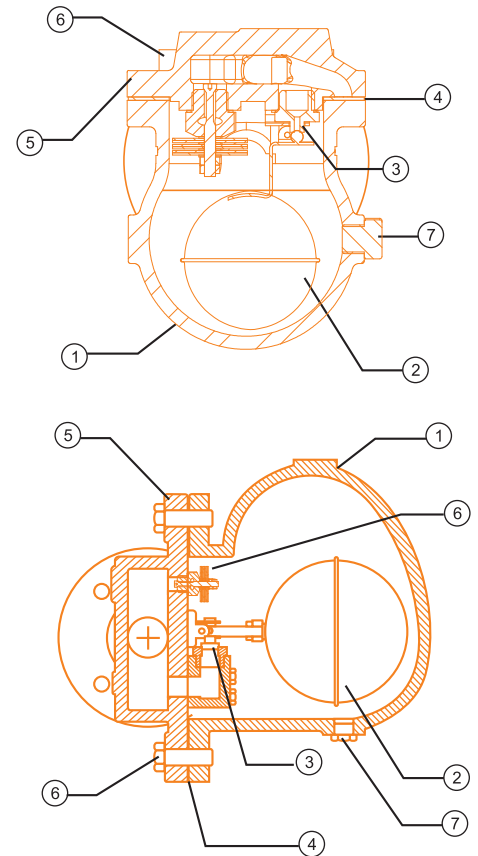
PMA - Maximum Allowable Pressure 16 bar

TMA - Maximum Allowable Temperature 250°C

Δ PMX - Max. Differential Pressure	
SG404-4.5	4.5 bar
SG404-10	10 bar
SG404-14	14 bar

## Materials of Construction

NAME OF PART	MATERIAL	STANDARD
(1) Body	D.I. / SGI	GGG-40
(2) Float Assembly	Stainless Steel	AISI 304
(3) Valve Seat	Stainless Steel	ASTM A276 Type 410
(4) Gasket		Non-Asbestos
(5) Cover	D.I. / SGI	GGG-40
(6) Fastners	Alloy Steel	ASTM 193 B7/A194 2H
(7) Drain Plug	Stainless Steel	ASTM A276 Type 304



## Discharge Capacity

TRAP DISCHARGE CAPACITY (kg/hr)										
PMO (bar)	Size	DIFFERENTIAL PRESSURE (bar)								
		1	2	3	4.5	6	8	10	12	14
4.5	DN 15, 20	275	345	395	490	---	---	---	---	---
	DN 25	940	1140	1330	1520	---	---	---	---	---
	DN 40, 50	3270	3790	4280	5040	---	---	---	---	---
10	DN 15, 20	150	180	210	255	310	400	430	---	---
	DN 25	660	775	880	1030	1190	1390	1610	---	---
	DN 40, 50	2680	2910	3105	3410	3710	4405	5110	---	---
14	DN 15, 20	145	170	195	225	275	340	390	430	490
	DN 25	450	500	570	660	730	850	960	1070	1180
	DN 40, 50	2280	2755	2965	3170	3370	3895	4380	4805	5175

**Application :** Ideally suited for Driers, Unit Heaters, Heat Exchangers and Injected Vessels etc.

**B.V.M. MANUFACTURERS & EXPORTERS**



# GLOBE STEAM STOP VALVE (FLANGED)

## Specification & Features:

Confirming to BS : 5152

Flanged ends to DIN 2533 PN-16 RF upto 150mm sizes.

For sizes 200mm to 300mm PN-10 RF

Straight / Angel pattern, outside screw, yoke type, rising stem.

With Back Seat Arrangement, Hand wheel operated.

Renewable 13% Cr. Stainless Steel (AISI - 410) Working Parts.

Minimum pressure drop inside the body due to streamlined body design.

## Pressure / Temperature ratings

Temperature °Celsius	-10° to +120°	150°	180°	200°	220°
Pressure bar	16	14.8	13.9	13	13
	10	9.2	8.5	8	8



ITEM CODE # CI - 101



ITEM CODE # CI - 102

## Materials of Construction

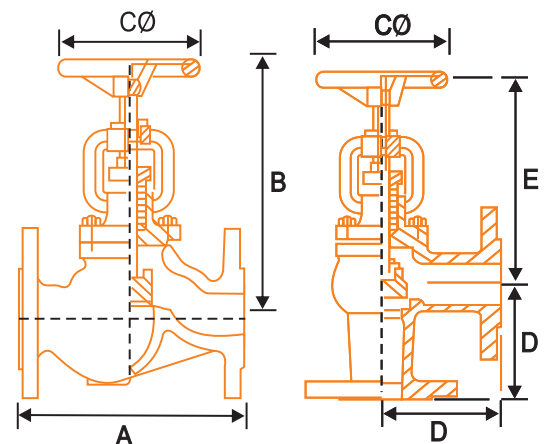
NAME OF PART	MATERIAL	STANDARD
Body, Bonnet & Gland	S.G. Iron / Cast Iron	DIN 1693 GGG40 / BS 1561 GJL - 200
Stem, Disc, Body Ring, Back Seat, Gland Bush	Stainless Steel	ASTM 276 Type 410
Handwheel	Pressed Steel	
Fastners	Alloy Steel	ASTM 193 B7 / A194 2H
Gasket	Non - Asbestos Fibre	
Gland Packing	Graphoil	
Yoke Bush	Stainless Steel	ASTM 582 Type 416

TEST PRESSURE (HYD.) - PN16 - BODY 24 BAR, SEAT 16 BAR.

PN10 - BODY 15 BAR, SEAT 10 BAR.

## Sizes / Dimensions

Sizes		Dimensions (mm)				
Inches	mm	A	B	D	E	CØ
1/2	15	130	161	90	150	100
3/4	20	150	165	95	150	100
1	25	160	180	100	155	125
1-1/4	32	180	196	105	185	125
1-1/2	40	200	225	115	190	160
2	50	230	250	125	195	160
2-1/2	65	290	280	145	240	200
3	80	310	295	155	265	200
4	100	350	335	175	305	250
5	125	400	425	200	370	250
6	150	480	470	225	430	315
8	200	600	580	275	480	400
10	250	730	720	325	700	400
12	300	850	850	375	800	400



**B.V.M. MANUFACTURERS & EXPORTERS**





# BELLOW SEAL GLOBE VALVE (FLANGED)

## Features:

- ➔ Double Ply Bellows used for Longer Valve Life.
- ➔ Triple Safety for Zero Emission (1.Bellows, 2.Back Seat, 3.Gland Packing)
- ➔ OS&Y Type, Non-Rising Handwheel.
- ➔ Renewable 13% Cr. Stainless Steel (AISI 410) Working Parts.
- ➔ Min. Pressure Drop inside the body due to streamlined Body Condition.

## Pressure / Temperature ratings

Temperature °Celsius	-10° to +120°	150°	180°	200°	220°
Pressure bar	16	14.8	13.9	13	13
	10	9.2	8.5	8	8



ITEM CODE # SG - 405

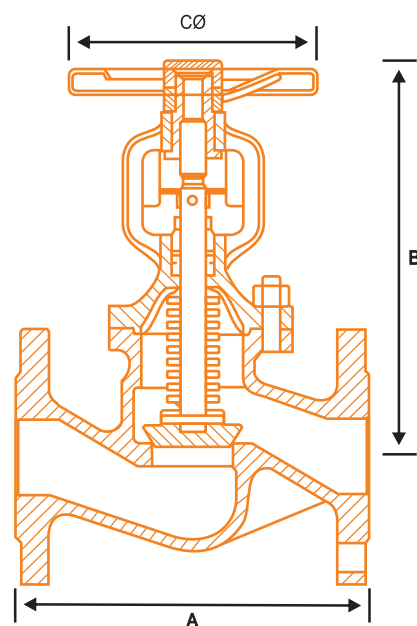
## Materials of Construction

NAME OF PART	MATERIAL	STANDARD
Body, Bonnet, Stem Guide	S.G. Iron	DIN 1693 GGG40
Body Ring, Disc, Stem	Stainless Steel	ASTM 276 Type 410
Bellows	Stainless Steel	SS 316Ti
Yoke Sleeve	Stainless Steel	ASTM 582 Type 416
Fasteners	Alloy Steel	ASTM 193 B7 / A194 2H
Handwheel	Pressed Steel	
Gasket	Non Asbestos Fibre	
Gland Packing	Graphoil	

TEST PRESSURE (HYD.) - BODY 24 BAR, SEAT 16 BAR

## Sizes / Dimensions (mm)

Size		Dimensions (mm)		
Inches	mm	A	B	C Ø
1/2"	15	130	190	120
3/4"	20	150	195	120
1"	25	160	210	140
1.1/4"	32	180	220	140
1.1/2"	40	200	255	160
2"	50	230	270	160
2.1/2"	65	290	345	240
3"	80	310	365	240
4"	100	350	395	240



## Application :

Ideally suited for Petroleum, Rubber, Textile, Paper, Food Processing, Pharmaceutical Industries, Thermal Power Station etc.

**B.V.M. MANUFACTURERS & EXPORTERS**



# S.G. IRON 'Y' - STRAINER (SCREWED)

## Specification & Features:

Screwed Female ends to BS: 21 / ISO: 7 / IS: 554

Stainless Steel (AISI - 304) or Brass perforated sheet screen is guided in body & cap.

Screwed Cap upto 2" & Bolted cover for 2.1/2" & 3" Sizes.

Fine Finish & Smooth Contours to minimize pressure drop in the strainer.

Large screening area makes the strainer efficient in performance.



ITEM CODE # SG - 401

## Pressure / Temperature ratings

Temperature °Celsius	50°	125°	250°	350°
Pressure bar	25	25	20	14

## Materials of Construction

NAME OF PART	MATERIAL	STANDARD
Body & Cap	S.G. Iron	DIN 1693 GGG 40
Gasket	Non - Asbestos Fibre	
Screen	Stainless Steel	AISI-304
Fastners for 2 1/2" & 3"	Alloy Steel	ASTM 193 B7 / A194 2H

## Limiting Conditions

Body Design Condition PN25

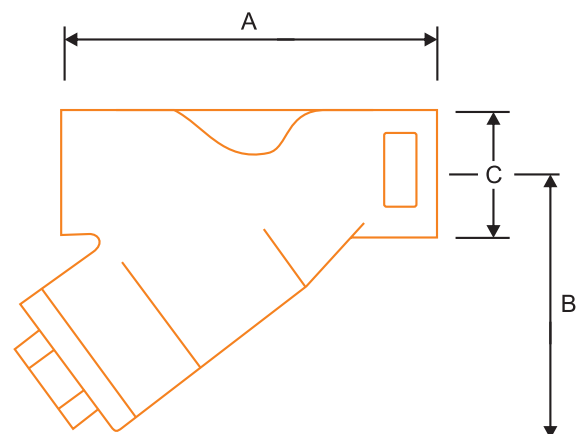
PMA - Maximum Allowable Pressure 25 bar

TMA - Maximum Allowable Temperature 350°C

Designed for a Maximum Cold Hydraulic Test Pressure of 38 bar.

## Sizes / Dimensions

Sizes		Dimensions		
inches	mm	A	B	C
1/2"	15	79	55	32
3/4"	20	93	65	36
1"	25	110	78	48
1-1/4"	32	140	103	60
1-1/2"	40	153	115	65
2"	50	177	140	76
2-1/2"	65	230	177	94
3"	80	237	183	105



**B.V.M. MANUFACTURERS & EXPORTERS**



# S.G. IRON 'Y'- STRAINER (FLANGED)

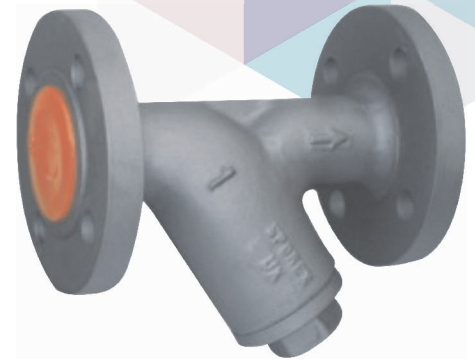
## Specification & Features:

Flanged Ends To DIN 2533 PN 16 RF

Stainless Steel (AISI - 304) / Brass perforated sheet screen is guided in body & cover.

Drain plug is provided to remove the accumulated foreign particles. Fine finish and smooth contours to minimize pressure drop in the strainer.

Large screening area makes the strainer efficient in performance.



ITEM CODE # SG - 402

## Pressure / Temperature ratings

Temperature °Celsius	20°	120°	200°	300°
Pressure bar	16	16	13	10

## Materials of Construction

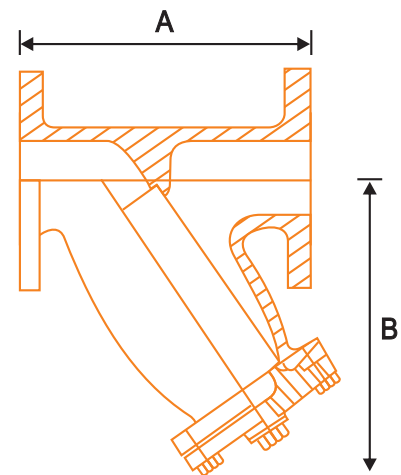
NAME OF PART	MATERIAL	STANDARD
Body & Cover	S.G. Iron	DIN 1693 GGG40
Drain Plug	S.G. Iron	DIN 1693 GGG40
Screen	Stainless Steel	AISI - 304
Gasket	Non - Asbestos Fibre	
Fastners	Alloy Steel	ASTM 193 B7 / A194 2H

**Test Pressure (Hydraulic)** - 21.1 kg/cm<sup>2</sup>g (300 Psig)

**Working Pressure (Steam)** 10.55kg/cm<sup>2</sup>g (150 Psig)

## Sizes / Dimensions

Sizes		Dimensions	
Inches	mm	A	B
1	25	160	112
1-1/2	40	200	152
2	50	230	205
2-1/2	65	290	250
3	80	310	268
4	100	350	290



**B.V.M. MANUFACTURERS & EXPORTERS**



# FORGED STEEL (A 105) GATE VALVE CLASS-800 (REDUCED BORE)

## Specification & Features:

Conforming To BS : 5352 / API 602 BSEN - 15761

Screwed female ends to BSP / NPT / Socket Welded Ends To ANSI B 16.11

Bolted bonnet, outside screw, yoke type, rising stem

Handwheel Operated, Sturdy in design & superb in quality.

## Pressure / Temperature ratings

Temperature °Celsius	-29° +38°	93.5°	149°	204°	260°	316°	343°	371°	399°	427°	* 454°	* 482°	* 510°	* 538°
Pressure bar	136	124	121	117	110	101	99	98	93	76	49	32	19	10

\* Permissible but not recommended for prolonged usage above 427°celsius



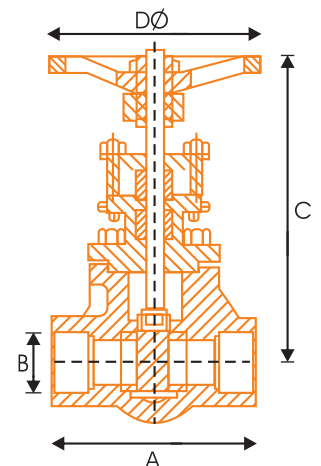
ITEM CODE # FS - 301

## Materials of Construction

NAME OF PART	MATERIAL	STANDARD
Body, Gland Flange & Bonnet	Forged Steel	ASTMA 105
Body Ring, Wedge	Stainless Steel	ASTM 276 Type 410
Stem, Gland Bush	Stainless Steel	ASTM 276 Type 410
Fastners	Alloy Steel	ASTM 193 B7 / A194 2H
Gasket	Spiral Wound S.S. 304 Graphite Filled	
Packing	Braided Graphite Yarn Containing Corrosion Inhibitor To Suit 400°C	
Hand Wheel	S.G. Iron	DIN 1693 GGG40

## Sizes / Dimensions

Sizes		Dimensions			
Inches	mm	A	B	C	DØ
1/2	15	80	1/2	132	80
3/4	20	88	3/4	142	80
1	25	100	1	165	90
1-1/2	40	145	1-1/2	220	152
2	50	170	2	240	152



**B.V.M. MANUFACTURERS & EXPORTERS**





# FORGED STEEL (A 105) GLOBE VALVE CLASS-800 (REDUCED BORE)

## Specification & Features:

Conforming To BS : 5352 / API 602 BSEN - 15761

Screwed female ends to BSP / NPT / Socket Welded Ends To ANSI B 16.11

Bolted bonnet, outside screw, yoke type, rising stem

Sturdy in design & superb in quality.

Handwheel operated.



## Pressure / Temperature ratings

Temperature °Celsius	-29° +38°	93.5°	149°	204°	260°	316°	343°	371°	399°	427°	* 454°	* 482°	* 510°	* 538°
Pressure bar	136	124	121	117	110	101	99	98	93	76	49	32	19	10

\* Permissible but not recommended for prolonged usage above 427°celsius

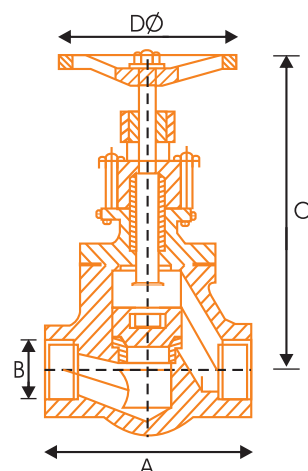
ITEM CODE # FS - 302

## Materials of Construction

NAME OF PART	MATERIAL	STANDARD
Body, Gland Flange & Bonnet	Forged Steel	ASTMA 105
Body Ring, Disc	Stainless Steel	ASTM 276 Type 410
Stem, Gland Bush	Stainless Steel	ASTM 276 Type 410
Fastners	Alloy Steel	ASTM 193 B7 / A194 2H
Gasket	Spiral Wound S.S. 304 Graphite Filled	
Packing	Braided Graphite Yarn Containing Corrosion Inhibitor To Suit 400°C	
Hand Wheel	S.G. Iron	DIN 1693 GGG40

## Sizes / Dimensions

Sizes		Dimensions			
Inches	mm	A	B	C	DØ
1/2	15	80	1/2	140	80
3/4	20	88	3/4	150	80
1	25	100	1	170	90
1-1/2	40	145	1-1/2	240	152
2	50	170	2	275	152



**B.V.M. MANUFACTURERS & EXPORTERS**



# FORGED STEEL (A 105) HORIZONTAL LIFT CHECK VALVE CLASS-800 (REDUCED BORE)

## Specification & Features:

Conforming To BS : 5352 / API 602 BSEN - 15761

Screwed female ends to BSP / NPT

Socket Welded Ends To ANSI B 16.11

Bolted cover, Sturdy in design & superb in quality.

## Pressure / Temperature ratings

Temperature °Celsius	-29° +38°	93.5°	149°	204°	260°	316°	343°	371°	399°	427°	* 454°	* 482°	* 510°	* 538°
Pressure bar	136	124	121	117	110	101	99	98	93	76	49	32	19	10

\* Permissible but not recommended for prolonged usage above 427°celsius

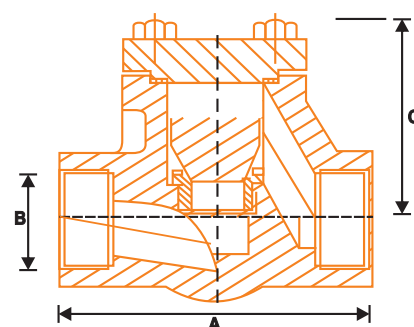
## Materials of Construction

NAME OF PART	MATERIAL	STANDARD
Body & Cover	Forged Steel	ASTM A 105
Body Ring & Disc	Stainless Steel	ASTMA 182 F 6A
Gasket	Spiral Wound S.S. 304 Graphite Filled	
Fastners	Alloy Steel	ASTM 193 B7 / A194 2H

**Test Pressure:** Body: 207 Bar (Hyd.)  
Seat: 152 Bar (Hyd.)

## Sizes / Dimensions

Sizes		Dimensions		
Inches	mm	A	B	C
1/2	15	80	1/2	58
3/4	20	88	3/4	62
1	25	100	1	75
1-1/2	40	145	1-1/2	98
2	50	170	2	120



ITEM CODE # FS - 303

**B.V.M. MANUFACTURERS & EXPORTERS**



IMPORTANT : Due To Continuous Development Programme, Design & Data In This Leaflet Are Subject To Change Without Any Notice.

# FORGED STEEL BALL VALVE CL-800

## 3 Pcs Design (Reduced Bore)

### Specification & Features:

Design Ref. BS EN ISO 17292 (BS 5351)

Three Pcs Design, Reduced Bore, Blow Out Proof Stem, Floating Ball, PTFE Seats / Seals.

Quarter Turn Lever Operated.

Screwed Female Ends to BS 21 / ISO 7 / NPT

Socket Weld Ends to ANSI B16.11

Butt Weld Ends to ANSI B16.25

Ideally suited for bi-directional, on/off duties for general services within the Pressure / Temperature ratings of PTFE Seals.

Three-piece construction makes for easy inspection and maintenance without breaking or remaking the Pipeline.



ITEM CODE # FS - 305

## Materials of Construction

NAME OF PART	MATERIAL	STANDARD
Body	Forged Carbon Steel	ASTM A105
Body Connector	Forged Carbon Steel	ASTM A105
Ball	Stainless Steel	AISI 410 / 304 / 316
Stem	Stainless Steel	AISI 410 / 304 / 316
Gland Nut	Stainless Steel	AISI 304
Locking Nut	Stainless Steel	AISI 304
Studs & Nuts	Stainless Steel	AISI 304
Lever	Mild Steel	BS: 970
Body Seal*	PTFE	-
Seat*	PTFE	-
Stem Packing*	PTFE	-

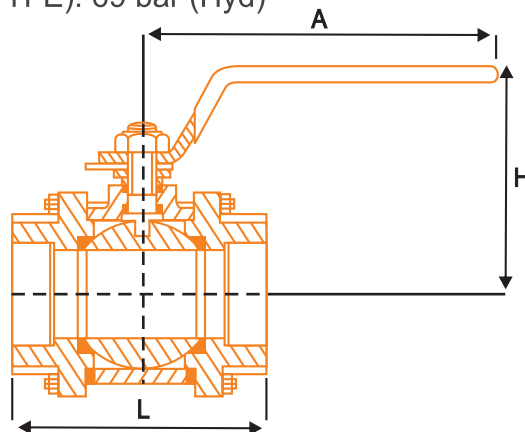
\* Other type of Gaskets such as GFT, CFT, PEEK etc. are also available on request.

**TESTING** : Standard EN 12266 – 1 (BS 6755 Part 1)

Body Test Pressure: 207 bar (Hyd.), Seat Test Pressure (PTFE): 69 bar (Hyd)

## Sizes / Dimensions

SIZES		DIMENSIONS (mm)		
Inch	mm	L	H	A
1/2"	15	64	65	100
3/4"	20	75	70	125
1"	25	88	80	150
1.1/4"	32	105	90	165
1.1/2"	40	114	105	190
2"	50	130	110	190



**B.V.M. MANUFACTURERS & EXPORTERS**



# BUTTERFLY VALVE (WAFER TYPE)

## Specification & Features:

Design Ref.: BS 3952, API-609, IS: 13095

Mounting Flange according to ISO: 5211

Available in Clutch Type Handles.

Also Suitable for Actuator & Gear Mountings

100% Leak Tight Design

Compact Design to Facilitate Installation

No Part in Contact with Fluid Except Disc and Liner.

## Materials of Construction

NAME OF PART	MATERIAL	STANDARD
Body	Cast Iron	BS 1561 GJL - 200
Disc	S.G. Iron / Stainless Steel	GGG 40 / CF8 / CF8M
Shaft	Stainless Steel	ASTM 276 TYPE 410
Lock Plate	Pressed Steel	
Handle & Lever	Pressed Steel	
Seat	Nitrile / EPDM / Silicon / Neoprene	
Bearing	Teflon	
Fastners	Alloy Steel	ASTM 193 B7 / A194 2H

ITEM CODE # CI - 110



## Sizes / Dimensions

Sizes		Dimensions (mm)										
Inches	mm	A	B	C	Mounting Flange				H	I	J	K
					D	E	F	G				
1 1/2"	40	32	13	40	50	14	7	65	210	170	5	6
2"	50	42	13	51	50	17	7	65	230	170	6	7
2 1/2"	65	44	13	65	50	17	7	65	260	170	7	9
3"	80	44	15	81	50	17	7	65	270	195	10	13
4"	100	50	15	103	50	17	7	65	310	195	12	18
5"	125	56	19	125	70	17	9	90	335	320	20	31
6"	150	56	19	153	70	17	9	90	360	320	35	50
8"	200	60	19	201	70	19	9	90	440	320	65	88
10"	250	68	24	253	102	22	11	125	540	450	130	---
12"	300	78	24	300	102	22	11	125	580	450	235	---

Hydrostatic Test Pressure (Bar)

**Series    Seat    Body**

PN-10    10    15

PN-16    16    24

## Suggested Operation

Upto 200 mm : Hand Lever

Over 200 mm : Gear

★ J & K - Operational Torques (Nm) for PN 10 & PN 16 Valves under Static Conditions.

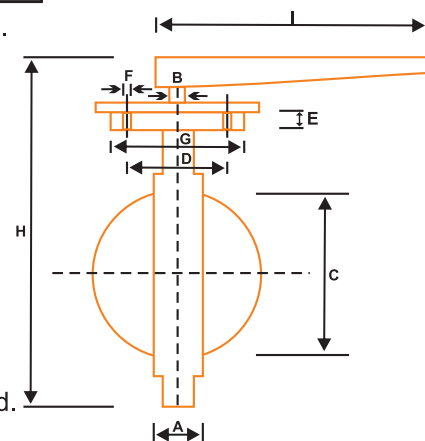
★ Lower operational torques for lesser wear & tear and much enhanced life.

## Applications

Paper & Pulp Industry, Waste & Effluent Treatment Plants, Water Treatment, Chemical & Sugar Industry, Fire Fighting, Drilling Rigs, Heating & Air Conditioning, Cooling Water Circulation, Compressed Air, Civil Constructions & numerous other applications.

## Note

For temperatures ranging above 150°C to 210°C SILICON RUBBER and temperatures below 5°C to -10°C special NITRILE RUBBER, recommended & provided.



**B.V.M. MANUFACTURERS & EXPORTERS**





# RESILIENT SEAT GATE VALVE

## Specification & Features:

- ➔ Resilient Seated Ductile Iron Gate Valve or commonly known as Soft Seat Gate Valve is designed to comply with BS 5163.
- ➔ Straight through bore area.
- ➔ Full Flow: The clear bore in the open position ensure optimum flow characteristics through the valve thereby reducing head loss.
- ➔ Full Close: No accumulation of debris under the wedge enabling the valve to be fully closed.
- ➔ Lower operating torque saving on automatic operators.
- ➔ Flange Ends, Bolted Bonnet, Inside Screw, Non-Rising Stem.
- ➔ Handwheel Operated.



ITEM CODE # CI - 113

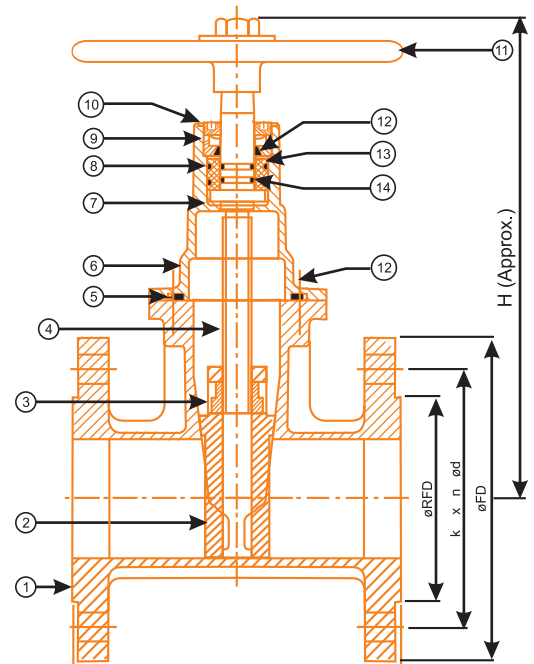
## Materials of Construction

SR. NO.	PART NAME	MATERIAL	SR. NO.	PART NAME	MATERIAL
1.	BODY	DI	8.	PACKING O' RING	RUBBER
2.	WEDGE	DI	9.	CHECK NUT	S.S.
3.	WEDGE NUT	LEADED TIN BRONZE	10.	DUST COVER	PLASTIC
4.	STEM	13%Cr.	11.	HANDWHEEL	DI
5.	GASKET	RUBBER	12.	ADJUSTING RING	PTFE
6.	BONNET	DI	13.	PACKING BUSH	PTFE
7.	WASHER	PTFE	14.	STEAM O' RING	RUBBER

Test Pressure: Body: 24 Bar (Hyd.) Seat: 16 Bar (Hyd.)

## Sizes / Dimensions

Size	FF	Ø FD	FT	Ø RFD	RFH	k	n-Ø d	H
DN 40	178	150	19	84	3	110	4-19	198
DN 50	178	165	19	99	3	125	4-19	205
DN 65	190	185	19	118	3	145	4-19	241
DN 80	203	200	21	133	3	160	4-19	277
DN 100	229	225	22	153	3	180	8-19	315
DN 125	254	250	22.5	183	3	210	8-19	360
DN 150	267	285	23	209	3	240	8-23	435
DN 200	292	340	24.5	264	3	295	8-23	545
DN 250	330	395	26	319	4	350	12-23	580
DN 300	356	445	27.5	367	4	400	12-22	670
DN 350	381	505	29	427	4	460	16-23	750
DN 400	406	565	30	477	4	515	16-28	910
DN 450	132	615	31.5	527	4	565	20-28	970
DN 500	457	670	33	582	4	620	20-28	1070
DN 600	508	780	36	682	5	725	20-31	1215



**Application :** Suitable for Water, Air, Fire Fighting & Marine Applications

**B.V.M. MANUFACTURERS & EXPORTERS**



# SWING TYPE WAFER CHECK VALVE

## DOUBLE ADVANTAGE - BIGGER BORE & WIDER OPENING

### Features :

- ➔ Light Weight
- ➔ Extremely Compact
- ➔ Economical
- ➔ Low Maintenance
- ➔ Easy Installation
- ➔ Tight Shut-off
- ➔ One Moving Part
- ➔ Interchangeable Disc Design
- ➔ Bonded Resilient Seat Option
- ➔ Radiography Clear Disc & Shaft Welding For Best Strength

ITEM CODE # FS - 304

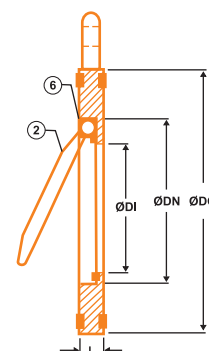
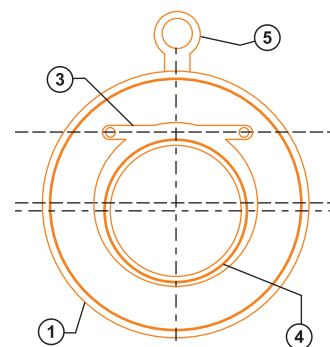


### Materials of Construction :

S.No.	NAME OF PART	MATERIAL / STANDARD
1.	BODY	MS-IS:2062, CS-ASTM-A216 GRADE WCB, SS-ASTM-A351 CF-8/CF-8M
2.	DISC	MS-IS:2062, CS-ASTM-A216 GRADE WCB, SS-ASTM-A351 CF-8/CF-8M
3.	HINGE PIN	CARBON STEEL / STAINLESS STEEL
4.	'O' RING	NITRILE, NEOPRENE, EPDM, SILICON
5.	EYE BOLT	CARBON STEEL
6.	BUSH	BRASS

### Sizes / Dimensions :

Nominal Size 'ØDN' (mm)	40	50	65	80	100	125	150	200	250	300
Inlet Bore 'ØDI' (mm)	24	34	45	57	78	100	122	163	204	240
Min. Out. Pipe Bore (mm)	40	50	65	78	100	125	150	200	250	300
Length 'L' (mm)	14	14	14	14	14	16	19	28	28	38
Outside Diameter 'ØDO' (mm)	84	97	110	130	160	192	216	273	336	384



### Note :

Working temperatures 20°C to 200°C , Working Pressure upto 500 PSIG Hyd.

### Suitability :

STEAM	WATER	OIL	AIR	GASES

**B.V.M. MANUFACTURERS & EXPORTERS**



# DUAL PLATE CHECK VALVE

## Features

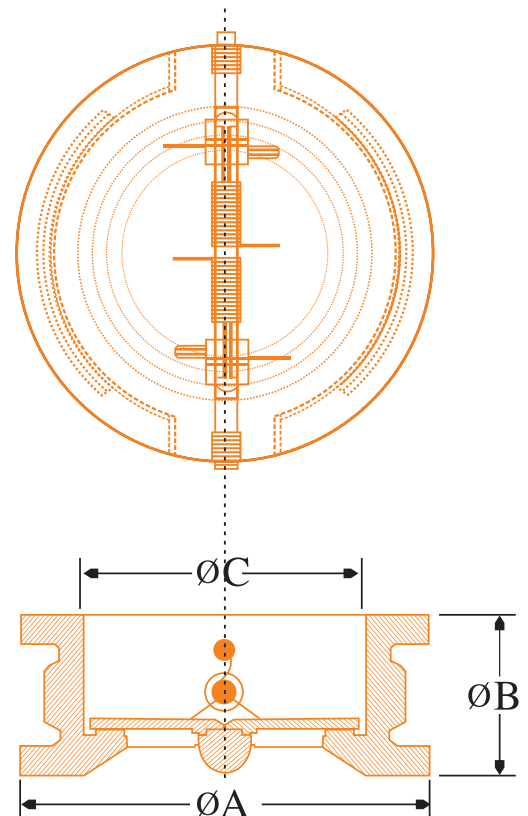
- Light Weight thus easier handling and self supporting.
- More compact & structurally sound design.
- Low Pressure Drop and reduced Energy Loss irrespective of Pressure Ratings.
- Streamlined flow way.
- Efficient and Positive sealing under most flow & pressure conditions. Valve closes before flow reversal at zero velocity.
- Inherent Non-Slamming. No external device / attachments required.
- Water hammer almost non-existent.
- Long life and trouble free operation
- Interchangeable disc design.
- Bonded resilient seat.
- Body hard epoxy painted for better corrosion resistance.
- Disc - WCB (Powder Coated), CF8, CF8M
- Independent plate suspension
- Flexible installation
- Optimizes space utilization.



ITEM CODE # CI - 111

## Materials of Construction

NAME OF PART	QTY.	MATERIAL
Body	1	Cast Iron / Cast Steel (WCB)
Disc	2	SGI, CF8, CF8M
Hinge Pin	1	Stainless Steel (AISI 304)
Stop Pin	1	Stainless Steel (AISI 304)
Spring	2	Stainless Steel
Retainer	4	EN-8, Stainless Steel
Body Bearing	2	Stainless Steel (AISI 304)
Plate Bearing	2	Stainless Steel (AISI 304)
Hook Bearing	1	Carbon Steel
Seat	1	Nitrile / EPDM
Seal Plug	4	Nitrile / EPDM



## Dimensions :

Nominal size (inch)	2"	2.1/2"	3"	4"	5"	6"	8"	10"	12"	14"	16"	18"	20"	22"	24"
Nominal size (inch)	50	65	80	100	125	150	200	250	300	350	400	450	500	550	600
Ø A (mm)	101	120	133	171	193	218	276	336	406	447	511	546	603	659	714
Ø B (mm)	54	54	57	64	70	76	95	108	143	184	191	203	213	222	222
Ø C (mm)	60	73	89	114	141	168	219	273	324	356	406	440	508	559	610

**NOTE:** Working Pressure upto 24 Bar Hyd

**B.V.M. MANUFACTURERS & EXPORTERS**



# STAINLESS STEEL BALL VALVE

## 3 Pcs Design (Screwed / Flanged)

### Specification & Features:

Design Ref. BS: 5351

Three Pcs Design, Full Bore, Blow Out Proof Stem, Floating Ball, PTFE Seats / Seals.

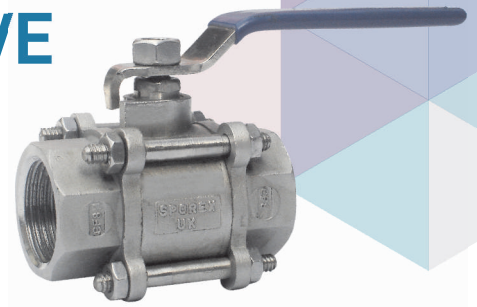
Quarter Turn Lever Operated.

Screwed Female Ends to BS 21 / ISO 7

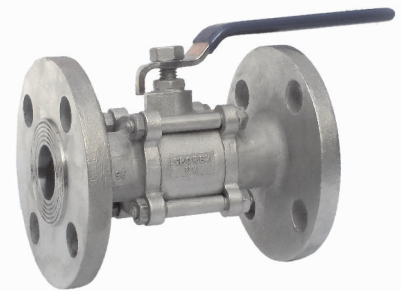
Flanged Ends to ASME B-16.5 CL-150.

Ideally suited for bi-directional, on/off duties for various process industries.

The stainless steel construction enables the valve to handle a wide range of corrosive media within Pressure / Temp. rating of PTFE Seals.



ITEM CODE # SS - 803



ITEM CODE # SS - 804

### Materials of Construction

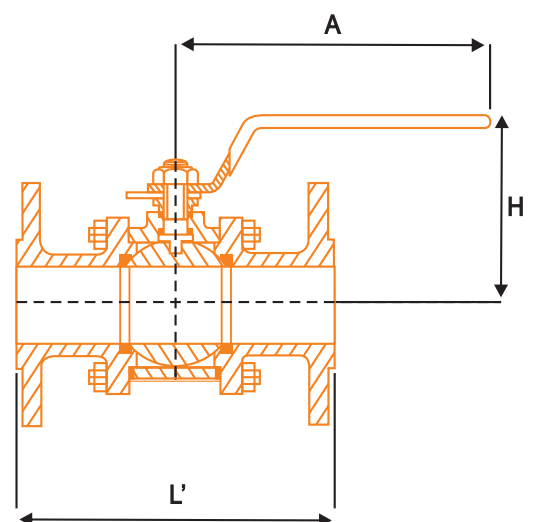
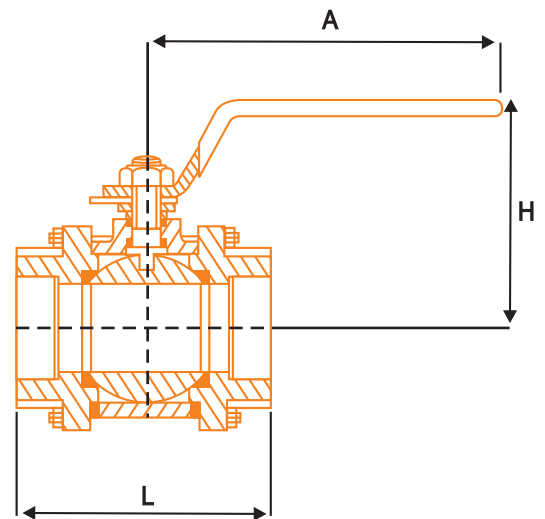
NAME OF PART	MATERIAL	STANDARD
Body	Stainless Steel	ASTM A351 Gr. CF8 / CF8M
Body Connector	Stainless Steel	ASTM A351 Gr. CF8 / CF8M
Ball	Stainless Steel	ASTM A351 Gr. CF8 / CF8M
Stem	Stainless Steel	AISI 304 / 316
Gland Nut	Stainless Steel	AISI 304
Locking Nut	Stainless Steel	AISI 304
Studs & Nuts	Stainless Steel	AISI 304
Lever	Stainless Steel	AISI 304 (PVC Coated)
Body Seal	PTFE	
Seat	PTFE	
Steam Packing	PTFE	

**Testing :** Standard EN 12266 – 1 (BS 6755 Part 1)

Description	Hydraulic	Steam
Test Pressure (bar)	69	10

### Sizes / Dimensions

SIZES		DIMENSIONS (mm)			
Inch	mm	L	L'	H	A
1/2"	15	66	108	50	100
3/4"	20	77	118	60	125
1"	25	85	127	60	150
1.1/2"	40	118	165	95	190
2"	50	132	178	100	190
2.1/2"	65	-	190	150	285
3"	80	-	203	170	285
4"	100	-	229	195	325



**B.V.M. MANUFACTURERS & EXPORTERS**



IMPORTANT : Due To Continuous Development Programme, Design & Data In This Leaflet Are Subject To Change Without Any Notice.



# STAINLESS STEEL BALL VALVE

## 2 Pcs Design (Screwed)

### Specification & Features:

Design Ref. BS: 5351

Two Pcs Design, Full Bore, Blow Out Proof Stem,

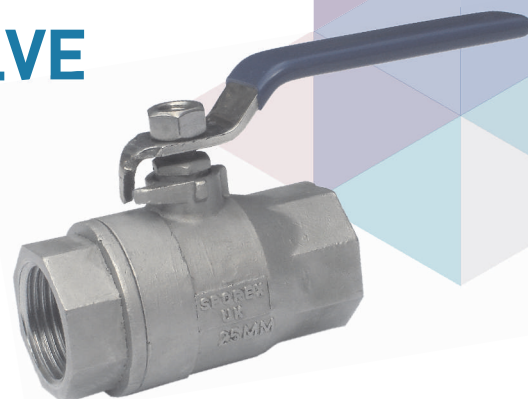
Floating Ball, PTFE Seats / Seals.

Quarter Turn Lever Operated.

Screwed Female Ends to BS 21 / ISO 7

Ideally suited for bi-directional, on/off duties for various process industries.

The stainless steel construction enables the valve to handle a wide range of corrosive media within Pressure / Temperature rating of PTFE Seats.



ITEM CODE # SS - 802

## Materials of Construction

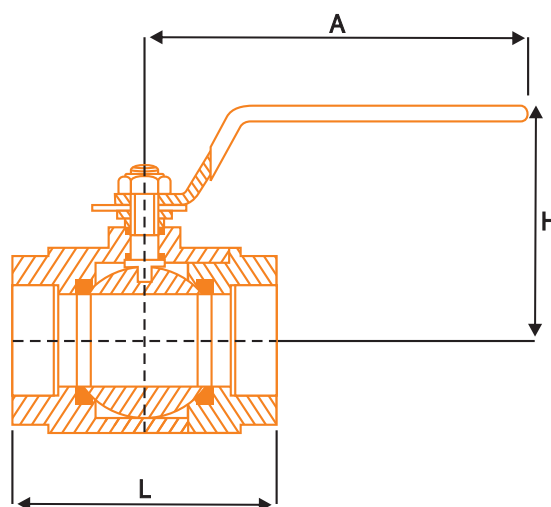
NAME OF PART	MATERIAL	STANDARD
Body	Stainless Steel	ASTM A351 Gr. CF8 / CF8M
Body Connector	Stainless Steel	ASTM A351 Gr. CF8 / CF8M
Ball	Stainless Steel	ASTM A351 Gr. CF8 / CF8M
Stem	Stainless Steel	AISI 304 / 316
Gland Nut	Stainless Steel	AISI 304
Locking Nut	Stainless Steel	AISI 304
Lever	Stainless Steel	AISI 304 (PVC Coated)
Body Seal	PTFE	
Seat	PTFE	
Steam Packing	PTFE	

## Testing : Standard EN 12266 – 1 (BS 6755 Part 1)

Description	Hydraulic	Steam
Test Pressure (bar)	69	10

## Sizes / Dimensions

SIZES		DIMENSIONS (mm)		
Inch	mm	L	H	A
1/4"	8	60	50	100
3/8"	10	60	50	100
1/2"	15	62	50	100
3/4"	20	73	60	125
1"	25	85	60	150
1.1/2"	40	105	95	190
2"	50	125	100	190
2.1/2"	65	155	150	285
3"	80	180	170	285
4"	100	210	195	325



**B.V.M. MANUFACTURERS & EXPORTERS**



# CAST STEEL (A 216 GR. WCB) GATE VALVE CLASS - 150

## Specification & Features:

Conforming to BS : 1414 / ANSI B16.34 / API 600

Flanged ends to ANSI B16.5 CL-150 RF

Outside screw, yoke type, rising stem, bolted bonnet.

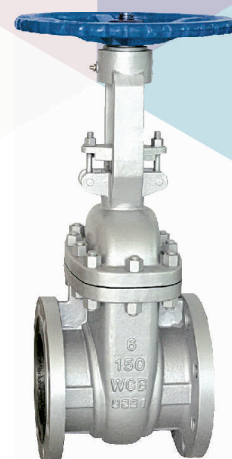
Renewable S.S 13% Cr. (AISI - 410) Working Parts.

Handwheel operated.

## Pressure / Temperature ratings in accordance with ANSI B16.34

Temperature °Celsius	-29° +38°	100°	150°	200°	250°	300°	350°	375°	400°	425°	450°	475°	500°	538°
Pressure bar	19.7	17.7	15.8	14.0	12.1	10.2	8.4	7.4	6.5	5.6	4.6	3.7	2.8	1.4

\*Prolonged Temperatures above 425 celsius may result in deterioration of the carbon phase of carbon steel.



ITEM CODE # CS - 201

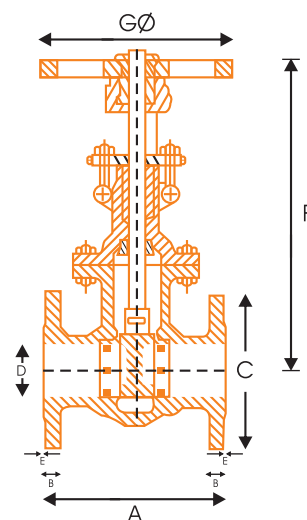
## Materials of Construction

NAME OF PART	MATERIAL	STANDARD
Body, Disc, Bonnet & Gland Flange	Carbon Steel	ASTMA 216 Gr. WCB
Body Seat Ring & Wedge Facing	Stainless Steel	ASTM 276 TYPE 410
Back Seat Bush, Lock Bush, Gland & Stem	Stainless Steel	ASTM 276 TYPE 410
Eye Bolt & Nut	Carbon Steel	
Grease Nipple, Grub Screw & Sleeve Nut	Steel	
Gasket	Non - Asbestos Fibre	BS - 1832
Nut	H.T. Steel	ASTMA 194 Gr. 2H
Stud	Alloy Steel	ASTMA 193 Gr. B7
Gland Packing	Graphoil	
Sleeve	S.S./Nodular Iron	ASTM 276 TYPE 304 / ASTM 439 D2

Test Pressure	Body	Seat
Hydraulic :	30 Bar	22 Bar
Air :	6.9 Bar	--

## Sizes / Dimensions

Sizes		Dimensions						
Inches	mm	A	B	C	D	E	F	GØ
1-1/2	40	165	14.3	127	73	1.6	330	210
2	50	178	16	152	92	1.6	340	210
2-1/2	65	190	17.5	178	104.8	1.6	395	210
3	80	203	19	190	127	1.6	430	225
4	100	229	23.8	229	157.2	1.6	521	255
6	150	267	25.4	279	216	1.6	666	356
8	200	292	28.6	343	270	1.6	783	400



**B.V.M. MANUFACTURERS & EXPORTERS**



IMPORTANT : Due To Continuous Development Programme, Design & Data In This Leaflet Are Subject To Change Without Any Notice.

# CAST STEEL (A 216 GR. WCB) GLOBE VALVE CLASS 150

## Specification & Features:

Conforming to BS:1873 / ANSI B16.34

Outside Screw & Yoke Type, Bolted Bonnet, rising stem, S.S. Trim,  
Plug Type Disk, Flanged Ends to ANSI B16.5 CL-150 R/F

## Pressure / Temperature ratings

Temperature °Celsius	-29° +38°	100°	150°	200°	250°	300°	350°	375°	400°	425°	*450°	*475°	*500°	*538°
Pressure bar	19.7	17.7	15.8	14.0	12.1	10.2	8.4	7.4	6.5	5.6	4.6	3.7	2.8	1.4

\* Prolonged temperature above 425°Celsius may result in deterioration of the carbon phase of carbon steel.



ITEM CODE # CS - 202

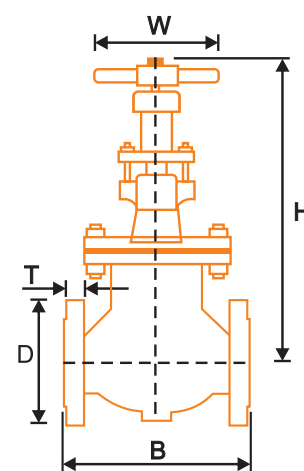
## Materials of Construction

NAME OF PART	MATERIAL	STANDARD
Body, Bonnet	Carbon Steel	ASTM A 216 Gr. WCB
Seat Ring, Disc	C.S. with 13% Cr. S.S. Facing	
Spindle, Spindle Nut	Stainless Steel	ASTM 276 TYPE 410
Bonnet Bush, Gland		
Gland Flange	Carbon Steel / Forged Carbon Steel	ASTM A 216 Gr. WCB / A 105
Washer, Hand Wheel Nut, Gland Bolting		
Gasket	Non - Asbestos Fibre	BS-1832
Bonnet Stud	Alloy Steel	ASTM 194 Gr. B7
Bonnet Stud Nut	H.T. Steel	ASTM 194 Gr. 2H
Handwheel	Cast Iron	BS 1561 GJL - 200
Gland Packing	Graphoil	

Test Pressure	Body	Seat
Hydraulic :	30 Bar	22 Bar
Air :	6.9 Bar	---

## Sizes / Dimensions

Sizes		Dimensions				
Inches	mm	B	D	T	H	W
1-1/2"	40	200	150	16	300	178
2"	50	230	165	18	316	203
2-1/2"	65	290	185	18	330	229
3"	80	310	200	20	365	254
4"	100	350	220	20	414	305
6"	150	480	285	22	505	354
8"	200	600	340	24	623	408



**B.V.M. MANUFACTURERS & EXPORTERS**



# CAST STEEL PARALLEL SLIDE BLOW DOWN VALVE

## Specification & Features:

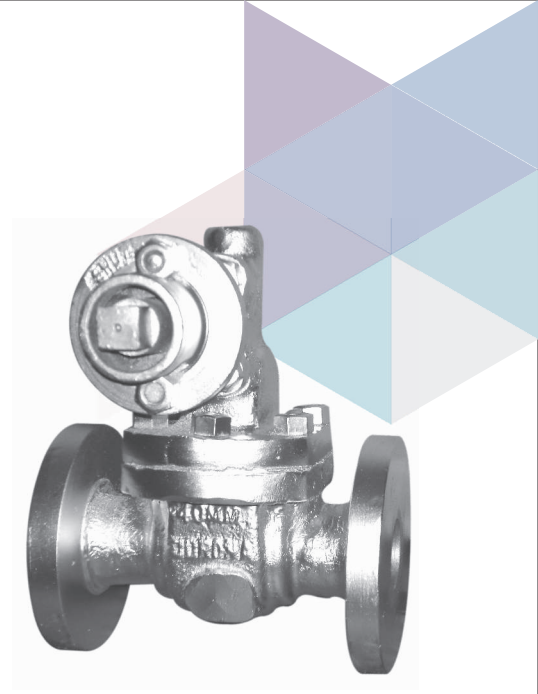
Flanged Ends To BS - 10 Table 'J'.

It maintains fluid tightness and is easy in operation because of parallel sliding action of discs.

High quality lubricated gland packing.

## Operation:

Spring keeps the disc in parallel position and disc removes any dust or deposits from the body rings. Hence low torque is required to operate the valve. Rack and Pinion arrangement enables to open / close in half turn.



ITEM CODE # CS - 203

## Materials of Construction

NAME OF PART	MATERIAL	STANDARD
Body & Bonnet	Cast Steel	ASTM A216 Gr. WCB
Rack & Pinion	Stainless Steel	ASTM 276 TYPE 410
Stuffing Box	Cast Steel	ASTM A216 Gr. WCB
Gland	Cast Steel	ASTM A216 Gr. WCB
Discs	Stainless Steel	ASTM 276 TYPE 410 + Stellite
Body Ring	Stainless Steel	ASTM 276 TYPE 410 + Stellite
Fastners	Alloy Steel	ASTM 193 B7 / A194 2H
Gasket	Steam Jointing	To Suit Service Conditions.
Spring	Spring Steel	EN-44 or Equivalent
Packing	Graphoil	
Key	Mild Steel	

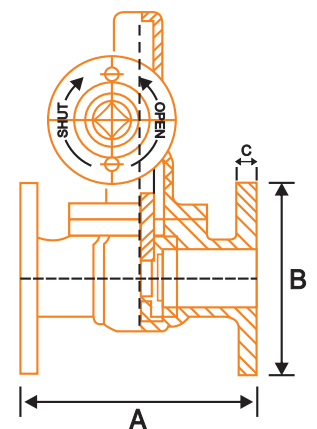
**Test Pressure (Hydraulic) - 700 Psig**

**Working Pressure (Steam) - 350 Psig**

**Maximum Service Temperature - 400°C**

## Sizes / Dimensions

Sizes		Dimensions		
Inches	mm	A	B	C
1	25	178	120.6	19.05
1-1/2	40	205	139.7	22.20
2	50	255	165.1	25.40
2-1/2	65	275	184.1	28.00



**B.V.M. MANUFACTURERS & EXPORTERS**



# HORIZONTAL SWING CHECK VALVE (FLANGED)

## Specification & Features:

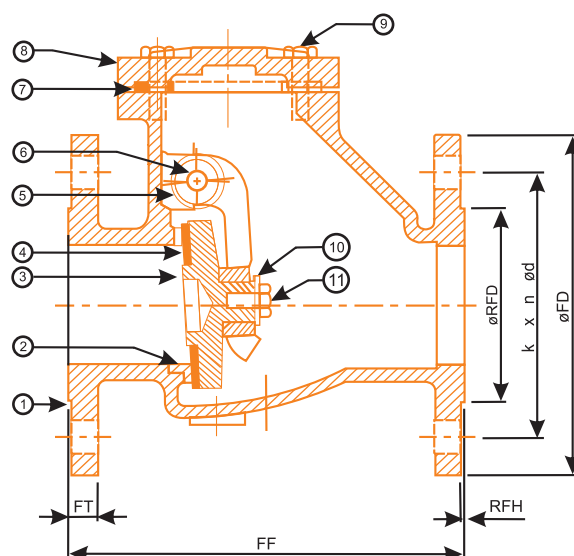
- ➔ Design Ref.: IS:5312.
- ➔ Self operative swing type design.
- ➔ Designed to allow maximum flow of water.
- ➔ Bye pass arrangement can be provided.
- ➔ Renewable seat with integrally moulded rubber liner.
- ➔ Flanged ends, Bolted Cover.
- ➔ Renewable Seat with Rubber Flap.



ITEM CODE # CI - 114

## Materials of Construction

SR. NO.	PART NAME	MATERIAL
1.	BODY	C.I.
2.	SEAT RING	LEADED TIN BRONZE
3.	DISC	C.I.
4.	DISC SEAT	EPDM
5.	HINGE	C.I.
6.	HINGE PIN	S.S.
7.	GASKET	EPDM
8.	COVER	C.I.
9.	BOLTS	S.S.
10.	WASHER	M.S.
11.	DISC BOLT	C.S.
12.	SIDE PLUG	S.S.



**Test Pressure:** Body: 24 Bar (Hyd.) Seat: 16 Bar (Hyd.)

## Sizes / Dimensions

Size	FF	Ø FD	FT	Ø RFD	RFH	k	n-Ø d
DN 50	203	165	19	99	3	125	4-19
DN 65	216	185	19	118	3	145	4-19
DN 80	241	200	21	133	3	160	4-19
DN 100	292	220	22	153	3	180	8-19
DN 125	330	250	22.5	183	3	210	8-19
DN 150	356	285	23	209	3	240	8-23
DN 200	495	340	24.5	264	3	295	8-23
DN 250	622	395	26	319	4	350	12-23
DN 300	698	445	27.5	367	4	400	12-22
DN 350	787	505	29	427	4	460	16-23
DN 400	914	565	30	477	4	515	16-28
DN 450	978	615	32	527	4	565	20-28
DN 500	978	670	33	582	4	620	20-28
DN 600	1295	780	36	682	5	725	20-31

**B.V.M. MANUFACTURERS & EXPORTERS**





# GUN METAL GLOBE VALVE (UNION BONNET) SCREWED / FLANGED

## Specification & Features:

Manufacture is to BS 5154/B PN 32

Screwed Female Ends to BS: 21 / ISO: 7 / IS: 554

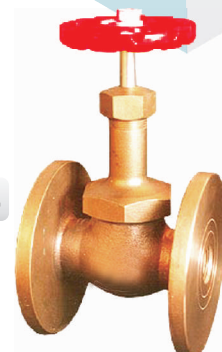
Flanged Ends to BS: 10 Table 'F'

Inside Screwed, Rising Spindle with Back Seat Arrangement

S.S. Working Parts, Hand Wheel Operated.



ITEM CODE # GM - 502



ITEM CODE # GM - 503

Temperature °Celsius	-10° to +100°	120°	130°	140°	150°	160°	170°	180°	190°	198°
Pressure bar	32.0	28.3	26.5	24.6	22.8	21.0	19.2	17.4	15.5	14.0

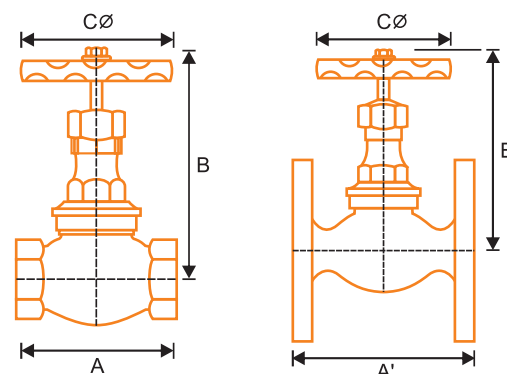
## Materials of Construction

NAME OF PART	MATERIAL	STANDARD
Body, Bonnet & Gland	Bronze	BS: 1982 CC 491K
Disc Nut & Gland Nut	Bronze	BS: 1982 CC 491K
Stem, Disc & Body Seat Ring	Stainless Steel	ASTM 276 TYPE 410
Handwheel	Cast Iron	BS 1561 GJL - 200
Nut & Washer	Mild Steel	BS: 970
Gland Packing	Graphol	

**Testing** - Each Valve Individually Tested to BS 5154

## Sizes / Dimensions

Sizes		Dimensions			
inches	mm	A	A'	B	C Ø
1/4"	8	60	-	110	60
3/8"	10	60	-	110	60
1/2"	15	68	82	117	70
3/4"	20	84	96	132	80
1"	25	95	112	148	86
1-1/4"	32	106	119	176	102
1-1/2"	40	120	132	188	102
2"	50	146	157	216	127
2-1/2"	65	180	185	248	150
3"	80	200	213	270	170
4"	100	248	255	332	190



**Option** - Available with Teflon / Neoprene Seating, Suitable for Oil, Air & Gas applications.

**B.V.M. MANUFACTURERS & EXPORTERS**



# GUN METAL GLOBE VALVE SCREWED / FLANGED

## Specification & Features:

Manufacture is to BS 5154/B PN 32 For sizes 1/2" to 2" and PN 25 for sizes 2-1/2" to 4"

Screwed Female Ends to BS: 21 / ISO: 7 / IS: 554

Flanged Ends to BS: 10 Table 'F'

Screwed in bonnet, Inside screw with S.S. working parts  
Rising Stem with back seat arrangement, Hand Wheel operated.



ITEM CODE # GM - 506



ITEM CODE # GM - 507

## Pressure / Temperature ratings

Temperature °Celsius		-10° to +100°	120°	150°	170°	180°	186°	190°	198°
Pressure bar	1/2" to 2" 2-1/2" to 4"	32.0 25.0	28.3 21.8	22.8 16.5	19.2 12.8	17.4 11.3	16.2 10.5	15.5 ---	14.0 ---

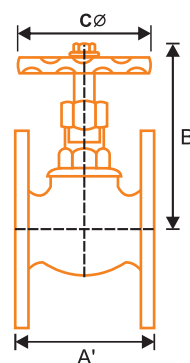
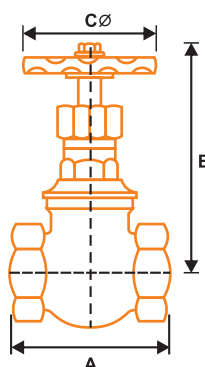
## Materials of Construction

NAME OF PART	MATERIAL	STANDARD
Body, Bonnet	Bronze	BS: 1982 CC 491K
Gland, Gland Nut	Bronze	BS: 1982 CC 491K
Seat, Seat Ring, Spindle	Stainless Steel	ASTM 276 TYPE 410
Screw & Washer	Mild Steel	BS: 970
Hand Wheel	Cast Iron	BS 1561 GJL - 200
Gland Packing	Graphol	

**Testing** - Each Valve Individually Tested to BS 5154

## Sizes / Dimensions

Sizes		Dimensions			
inches	mm	A	A'	B	CØ
1/2"	15	55	55	86	52
3/4"	20	67	64	103	59
1"	25	79	76	115	67
1-1/4"	32	88	83	122	73
1-1/2"	40	101	98	139	85
2"	50	123	110	161	85
2-1/2"	65	135	156	188	110
3"	80	156	162	196	133
4"	100	186	197	215	149



**Option** - Available with Teflon Seating for Oil & Air applications, Bronze working parts for water services.  
Angle Globe Valve also available.

**B.V.M. MANUFACTURERS & EXPORTERS**



# GUN METAL HORIZONTAL LIFT CHECK VALVE (UNION CAP) SCREWED / FLANGED

## Specification & Features:

Manufacture is to BS 5154/B PN 32

Screwed Female Ends to BS: 21 / ISO: 7 / IS: 554

Flanged Ends to BS: 10 Table 'F'

Guided Plug Type Disc, S.S. Working Parts.

Increased Lift to ensure full flow area.

Available with Teflon Seating also for air application.



ITEM CODE # GM - 504



ITEM CODE # GM - 505

## Pressure / Temperature ratings

Temperature °Celsius	-10° to +100°	120°	130°	140°	150°	160°	170°	180°	190°	198°
Pressure bar	32.0	28.3	26.5	24.6	22.8	21.0	19.2	17.4	15.5	14.0

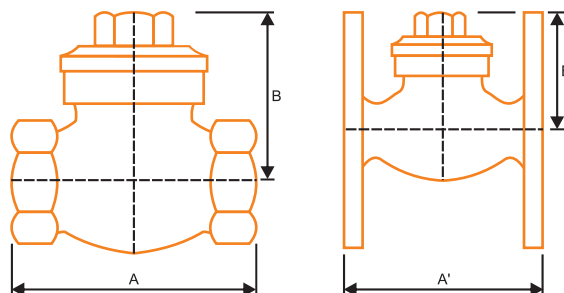
## Materials of Construction

NAME OF PART	MATERIAL	STANDARD
Body & Bonnet	Bronze	BS: 1982 CC 491K
Body Seat Ring & Disc	Stainless Steel	ASTM 276 TYPE 410

**Testing** - Each Valve Individually Tested to BS 5154

## Sizes / Dimensions

Sizes		Dimensions		
inches	mm	A	A'	B
1/4"	8	58	-	40
3/8"	10	58	-	43
1/2"	15	68	82	48
3/4"	20	84	96	50
1"	25	95	112	61
1-1/4"	32	106	119	72
1-1/2"	40	120	132	84
2"	50	146	157	93
2-1/2"	65	180	185	109
3"	80	200	213	121
4"	100	248	248	146



**B.V.M. MANUFACTURERS & EXPORTERS**



# GUN METAL CHECK VALVE SCREWED / FLANGED

## Specification & Features:

Manufacture is to BS 5154/B PN 32 for sizes 1/2" to 2"  
and PN 25 for sizes 2 1/2" to 4"

Screwed Female Ends to BS: 21 / ISO: 7 / IS: 554

Flanged Ends to BS: 10 Table 'F'

Screwed in bonnet, Integral seat, Guided Plug type disc.



ITEM CODE # GM - 508



ITEM CODE # GM - 509

## Pressure / Temperature ratings

Temperature °Celsius		-10° to +100°	120°	150°	170°	180°	186°	190°	198°
Pressure bar	1/2" to 2"	32.0	28.3	22.8	19.2	17.4	16.2	15.5	14.0
	2-1/2" to 4"	25.0	21.8	16.5	12.8	11.3	10.5	---	---

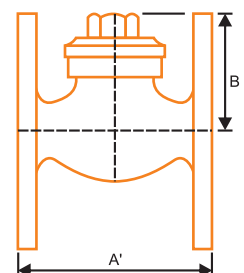
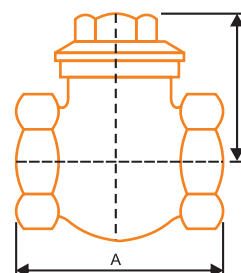
## Materials of Construction

NAME OF PART	MATERIAL	STANDARD
Body & Bonnet	Bronze	BS: 1982 CC 491K
Disc, Seat Ring	Stainless Steel	ASTM 276 TYPE 410

**Testing** - Each Valve Individually Tested to BS 5154

## Sizes / Dimensions

Sizes		Dimensions		
inches	mm	A	A'	B
1/2"	15	55	55	38
3/4"	20	67	64	44
1"	25	79	76	51
1-1/4"	32	88	83	52
1-1/2"	40	101	98	62
2"	50	123	110	77
2-1/2"	65	135	156	88
3"	80	156	162	93
4"	100	186	197	110



**Option** - Available with Teflon Seating for Oil & Air applications, Bronze working parts for water services.  
Also available Swing Check Valve & Angle Check Valve.

**B.V.M. MANUFACTURERS & EXPORTERS**



# HORIZONTAL LIFT CHECK VALVE (FLANGED)

## Specification & Features:

Confirming to BS : 5153

Flanged ends to DIN 2533 PN-16 RF upto 150mm sizes.

For size 200mm PN-10 RF

Straight / Angel pattern, bolted cover, Full flow Area.

Renewable 13% Cr. Stainless Steel (AISI - 410) Working Parts.

Minimum pressure drop inside the body due to streamlined body design.



ITEM CODE # CI - 103



ITEM CODE # CI - 104

## Pressure / Temperature ratings

Temperature °Celsius	-10° to +120°	150°	180°	200°	220°
Pressure bar	16	14.8	13.9	13	13
	10	9.2	8.5	8	8

## Materials of Construction

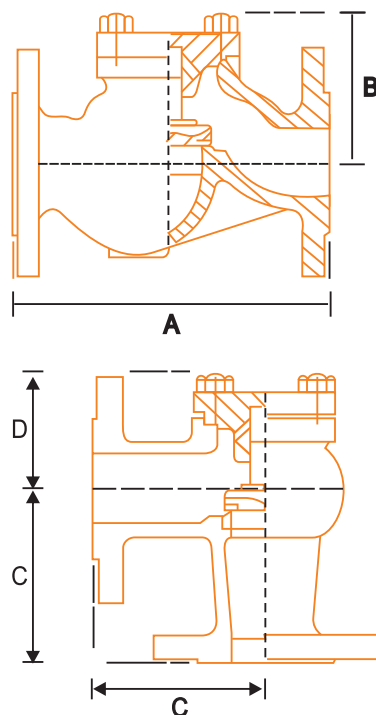
NAME OF PART	MATERIAL	STANDARD
Body, Cover & Disc	S.G. Iron / Cast Iron	DIN 1693 GGG40 / BS 1561 GJL - 200
Fastners	Alloy Steel	ASTM 193 B7 / A194 2H
Disc & Body Ring	Stainless Steel	ASTM 276 TYPE 410
Gasket	Non - Asbestos Fibre	

TEST PRESSURE (HYD.) - PN16 - BODY 24 BAR, SEAT 16 BAR.

PN10 - BODY 15 BAR, SEAT 10 BAR.

## Sizes / Dimensions

Sizes		Dimensions (mm)			
Inches	mm	A	B	C	D
1/2	15	130	66	90	52
3/4	20	150	70	95	54
1	25	160	76	100	57
1-1/4	32	180	84	105	64
1-1/2	40	200	102	115	76
2	50	230	112	125	83
2-1/2	65	290	123	145	95
3	80	310	140	155	108
4	100	350	156	175	125
5	125	400	200	200	140
6	150	480	230	225	182
8	200	600	275	275	190



**B.V.M. MANUFACTURERS & EXPORTERS**





# G.M. SAFETY VALVE / RELIEF VALVE

## (Screwed Ends)

### Specification & Features:

Straight Pattern, Open Discharge,

Screwed Male Threads at Inlet to BS 21.

Angle Pattern, Enclosed Discharge, Screwed Male Threads at Inlet and Screwed Female Ends at Outlet to BS 21.

These Valves start opening at the set pressure & open in direct proportion to the increase, in order of set pressure.

These should be installed nearer to the pressure vessel they protect. When installed, they should be one size smaller than the pipeline size.



## Materials of Construction

ITEM CODE # GM - 510

ITEM CODE # GM - 511

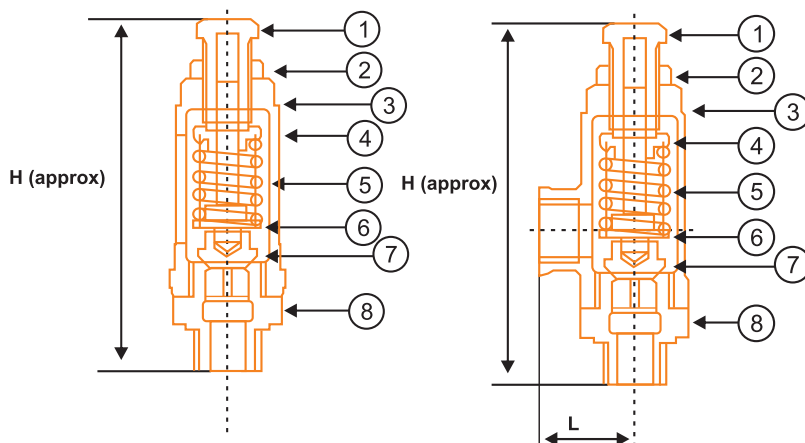
NAME OF PART	MATERIAL	STANDARD
1. Adjusting Screw	Bronze	BS: 1982 CC491K
2. Locking Nut	Brass	BS: EN 12165 Gr. W617N
3. Spring Chamber	Bronze	BS: 1982 CC491K
4. Spring Disc	Bronze	BS: 1982 CC491K
5. Spring	Carbon Steel	EN 44
6. Stem	HT Brass	BS: EN 12165 Gr. CW721R
7. Disc	Bronze	BS: 1982 CC491K
8. Body	Bronze	BS: 1982 CC491K

## Testing :

Each Safety / Relief Valve is tested for Body and Seat Tightness at 300 Psig (Hyd.)

## Sizes / Dimensions

SIZES		DIMENSIONS (mm)	
Inch	mm	H	L
1/2"	15	148	38
3/4"	20	160	39
1"	25	178	48
1.1/4"	32	180	50
1.1/2"	40	210	59
2"	50	255	59



## Setting :

The Safety / Relief Valve is normally pre-set at 5 Bar but is adjustable from 2 Bar to 10 Bar. To set the pressure, connect the male inlet end of the valve to the supply system which is fitted with a pressure gauge. Unscrew the locking Nut. Set the Adjusting Screw with a spanner by turning clockwise to increase the pressure & anti-clockwise to decrease the pressure. Check the Gauge. Screw the Locking nut tightly.

**B.V.M. MANUFACTURERS & EXPORTERS**





Perfection & Precision  
are the two distinctions  
that set our  
impeccable quality  
Industrial Valves  
& Fittings apart...

## B.V.M. MANUFACTURERS & EXPORTERS

📍 Dhogri Road, Near Nurpur, Jalandhar-144 012. (PB.) INDIA. ☎️ +91 2610713, 2611842, 2441427  
📞 +91 181 2611842 ✉️ info@bvmexports.com 🌐 www.bvmexports.com